



dormakaba **Terminal 96 00**

Time recording and
access control in
compact design



The perfect entry solution – simply beautiful and beautifully simple

Secure and uncomplicated attendance recording, door control as well as a contemporary staff communication – this is what the dormakaba terminal 96 00 stands for. The expandable all-rounder is presented in a pleasant, compact format, and it distinguishes itself by high stability.

The user interface offers extensive configuration options to be adapted to your corporate identity featuring company-specific content and applications.

Additional options like CardLink extend the scope of functions, making it demand-oriented and custom-fit. And the best part: Thanks to 1-click installation and Power over Ethernet (PoE), the terminal 96 00 is installed in a few simple steps – and immediately ready to use.

Thanks to the optional class of protection IP65, the terminal, with its robust housing and the impact-resistant glass screen, is extra dust- and water-proof – and thus highly durable even in outdoor installation.

High-tech compact packing – features & benefits at a glance

Bright 4" touchscreen

for intuitive operation

Multi RFID reader

for contactless identification with LEGIC or MIFARE media

Optional multi RFID reader with BLE

for comfortable booking with a smartphone

Optional class of protection IP65

for reliable protection from dust and water

Stable housing and robust glass screen

for durability

Freely configurable user interface

for individual icons and content

Integration of apps

for company-specific requirements

Door control

for simple access control



WiFi and mobile communication connection

for wireless data transfer

1-click installation

for quick and easy commissioning

Modern design

for a representative corporate image

CardLink function

for easy integration of offline door components

Power over Ethernet (PoE)

for an uncomplicated power supply and network integration

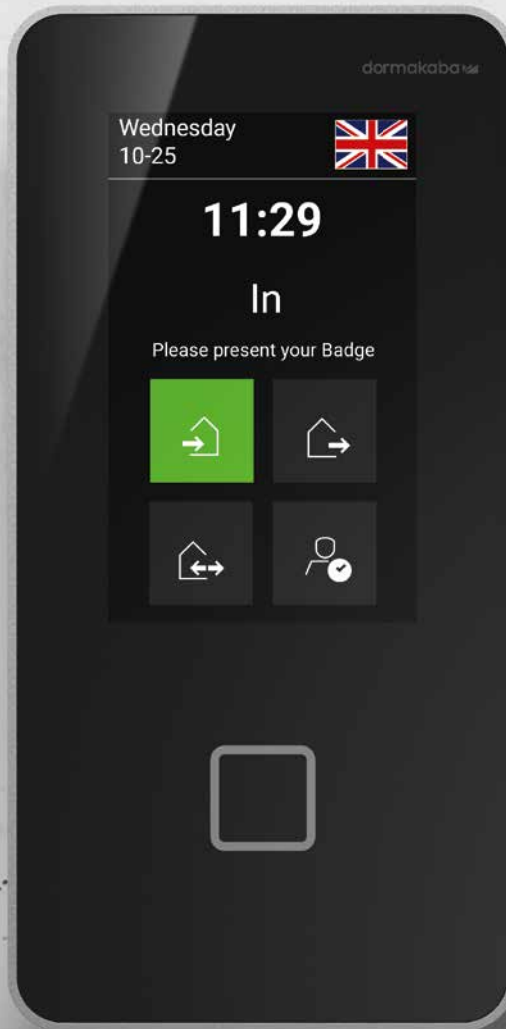
Compatible with previous versions

for a problem-free upgrade

Integrated loudspeaker

for clear audio output as acoustic signal or language

with freely
configurable user
interface



01

01

New standard interface
(ex works)

02

Interface with
white background

03

Interface with
company-specific
background image

04

Freely configured
interface in
corporate identity

05

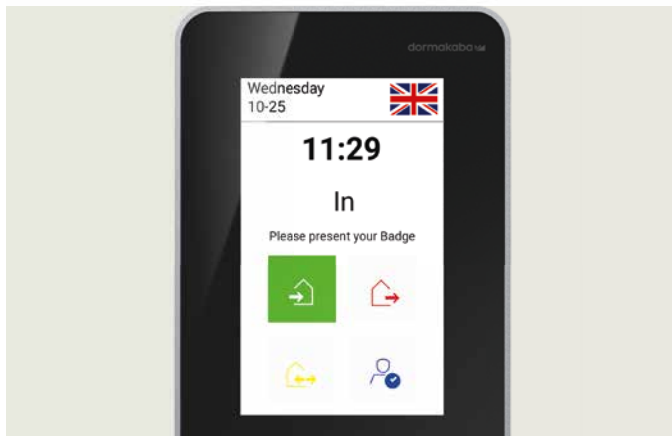
Freely configured
interface in
corporate identity

Maximum design freedom – your chosen look and acoustics

The terminal 96 00 makes a statement with its looks and beyond. Even the user interface is convincing with attractive, modern design. Would you rather like to choose the look and acoustics yourself? No problem. The user interface is freely configurable, and with a few simple steps, it appears as individual as your company.

Say goodbye to pre-set display layouts: Be it your own colours, background images, logo, symbols, apps or multimedia content – you decide how your terminal should look.

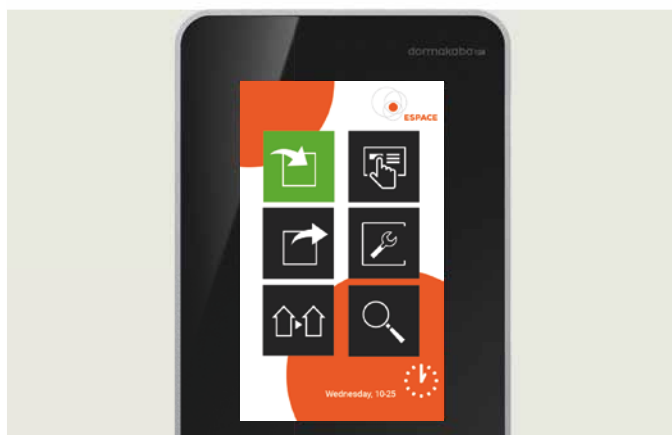
With the text-to-speech function, the function key texts are spoken out loud. This helps visually impaired people with a secure and error-free operation of the terminal.



02



03



04



05

Ready to go in no time – thanks to easy installation and integration

Simply kick off:

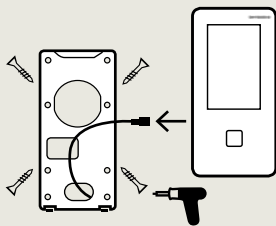
- Network integration via Ethernet port
- Power supply with Power over Ethernet (PoE)
- Supports common RFID media
- Compatible with previous terminal series



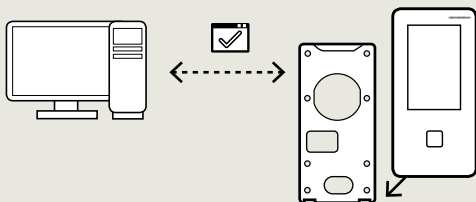
Quick and easy commissioning

Fast, easy and secure mounting:

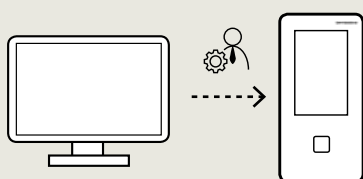
1. Secure wall mounting plate



2. Attach and secure terminal for automatic network login (DHCP)



3. User-friendly configuration





Smartphone instead of ID card

Simply book with smartphone: the optional function for Mobile Access makes it possible. Recording working hours and opening doors with a smartphone* – that is popular with most of the staff. The ID card is sometimes forgotten, but your staff always has their smartphone with them. Therefore, using the smartphone as registration medium at the terminal – or as a complete registration station for attendance recording – reduces the correction bookings piling up in HR and thus reduces your effort for managing and issuing ID cards. And smartphones being very personal objects, they are not handed over to other colleagues for use.

* Scope of functions depends on the dormakaba system solutions used

All option packages at a glance

| 9600-K6 | Option package 96 20 | Option package 96 40 | Option package 96 60 |
|---|----------------------|----------------------|----------------------|
| Device software | | | |
| B-client HR20 | ● | ● | ● |
| Reader | | | |
| Multi RFID reader (LEGIC/MIFARE) with BLE | ● | ● | ● |
| HID iClass SE proximity reader | ○ | ○ | ○ |
| Host interface | | | |
| 10/100/1,000 MBit Ethernet interface | ● | ● | ● |
| WLAN | ○ | ○ | ○ |
| 3G mobile (https communication) | ○ | ○ | ○ |
| Power supply | | | |
| Power over Ethernet | ● | ● | ● |
| Options | | | |
| Door control | ○ | ● | ● |
| Data encryption | ● | ● | ● |
| CardLink | ○ | ● | ● |
| Mobile Access – booking with a smartphone | ○ | ○ | ○ |
| Storage options | | | |
| 200 persons | ● | – | – |
| 1,000 persons | ○ | – | – |
| 2,000 persons | ○ | ● | – |
| 10,000 persons | ○ | ○ | ● |
| 10,000+ persons | ○ | ○ | ○ |
| Design | | | |
| Increased class of protection IP65 | ○ | – | – |
| Surface-mounted cable feed | ○ | – | – |
| Add-on I/Os (surface-mounted) | ○ | ● | ● |
| Removed I/Os (flush-mounted) | ○ | ○ | ○ |

Standard ●
Option ○
Not possible –

Note: The scope of effectively available product functions depends on the context in which the system is used.



**Door
Hardware**



**Electronic
Access & Data**



**Mechanical
Key Systems**



Lodging Systems



**Entrance
Systems**



**Interior Glass
Systems**



Safe Locks



Service

dormakaba
International Holding AG
Hofwisenstrasse 24
CH-8153 Rümlang
T +41 44 818 90 11
info@dormakaba.com
www.dormakaba.com